

Plymouth University Marine Station

Dr Alex Nimmo Smith
Chair – Marine Resources Committee

**MARINE
STATION
WITH
PLYMOUTH
UNIVERSITY**

Diving & Marine Centre – Limitations

- Dilapidated and unsightly 1960s building
- Restricted teaching space
- Primary focus on training, minimal capacity for academic activity
- Now demolished

**MARINE
STATION
WITH
PLYMOUTH
UNIVERSITY**



University is investing £4.65m in a new Marine Station with:

- Enhanced facilities for research informed teaching (classrooms, wet laboratory, seawater aquarium and equipment stores)
- Re-alignment of activity and staffing to new academic mission for September 2014

**MARINE
STATION
WITH
PLYMOUTH
UNIVERSITY**





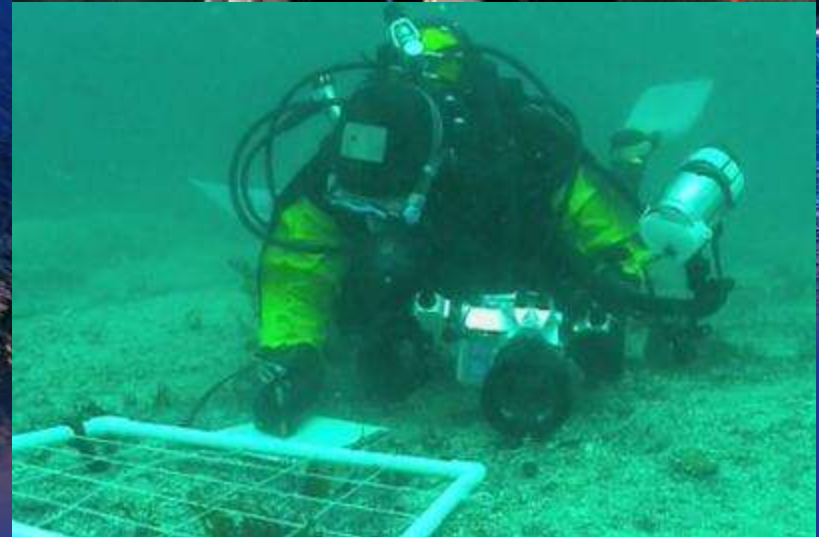
**MARINE
STATION
WITH
PLYMOUTH
UNIVERSITY**



**MARINE
STATION
WITH
PLYMOUTH
UNIVERSITY**

Facilities & Resources

- Shore-base for *RV Falcon Spirit* & small vessel fleet
- Extensive field equipment – ROV, CTD Rosette, MBES, Sidescan, Cores, Grabs etc.
- Base for HSE SCUBA training & academic diving (c.70 MB, ENV, MarSci, CivEng students per year)



Opportunities

- Involvement in monitoring adds academic value for our students
- Need to ensure sampling methodologies meet required standards – replicates, repeatability & QA
- Potential for regular sampling across broad range of physical, chemical & biological parameters
- Would look for reciprocal data sharing arrangements and active engagement with students